

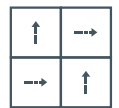
technical specifications

Product Name	Infinity / Infinity Stitch
Product Description	Low Level Loop
Pile Yarn Description	100% nylon (polyamide PA) space dyed & recycled solution dyed*
Tile Dimensions	50 cm x 50 cm
Pile Yarn Weight	550g/m ² +/-10%
Total Weight	4000g/m ² +/-10%
Pile Height	4.8mm +/-10%
Total Thickness	7.3mm +/-10%
Gauge/ends per 10cm	1/10 th gauge 50 stitches
Tufts per m2 / Pile Density	196,500/m ² +/-10%
Backing Description	Accummen™, 75% recycled
Wear Classification	BS EN 1307 Heavy Commercial Use Class 33
Luxury Rating Class	LC1
Flammability	Euroclass Bfl-s1
Thermal Resistance	Tog Rating 0.39; ISO 8302: 0.04 m ² K/W
Castor Chair Rating	BS EN 985 Pass - suitable for continuous use
Hexapod	BS ISO 10361: Method B:2000 3 to 4
Static Loading	BS 4939: 1987 (2003) Recovery >80% (24hrs)
Dynamic Loading	BS ISO 2094: 1999 (2005) Loss <20% (1000 impacts)
Body Voltage Test	BS ISO 6356:2000 <2kV
Colour Fastness To Light	BS EN ISO 105 - B02 Minimum Grade 6
Colour Fastness To Shampoo	BS 1006:UK-TB: 1990 Minimum Grade 4-5
Sound Absorption Coefficient	BS EN 354:2003
Reduction in Impact Noise	BS EN ISO 140-8: Part 8: 1998 28dB
Reduction in Impact Noise at 1000Hz	BS EN ISO 140-8: Part 8: 1998 49.1dB
Number Of Tiles Per Box	20 (5m ²)

For best results we recommend



Monolithic



Quarter Turn



This floor covering was made with renewable electricity



Environmental Profiles Scheme Certificate Number ENP353



Certificate Number FM01440 BS EN ISO 9001:2008



Statement on level of emission of volatile substances in indoor air posing a toxic threat during inhaling – on a scale from A+ (very low-emission) to C (high-emission)



The Building Information Foundation, Finland. Certified building materials with low emission class M1

environmental information

- Burmatex products achieve either A or A+ across all the BREEAM defined building applications
For specific rating, please refer to www.breeam.co.uk
- Burmatex products qualify for SKA as they achieve one or more requested criteria
- All Burmatex carpet/carpet tile ranges are made at its single UK manufacturing site
- Wherever possible, raw materials including yarn/fibre are sourced locally i.e. within 20 miles
- Over 75% of Burmatex Accummen™ backing comes from recycled materials
- Continuous assessment and improvement of manufacturing process to minimise use of raw materials/power
- All manufacturing waste is recycled and all electricity used is from renewable resources
- All Burmatex products are heavy contract with a 10 year guarantee for maximum useful life
- Certified, Class A+: very-low VOC Emission

LEED® v4 - Burmatex products can contribute towards satisfying the following credits for LEED v4: NC-v4/C1-v4 MRC2/MRC3 (Building product disclosure and optimization - environmental product declarations), MRC3/MRC4 (Building product disclosure and optimization - sourcing of raw materials), EQc1 (Enhanced indoor air quality strategies), EQc2 (Low-emitting materials), EQc6 (Interior lighting - Option 2. Lighting quality (E - H)) and EQc9 (Acoustic Performance). Products are not reviewed under LEED. LEED credit requirements cover the performance of materials in aggregate, not the performance of individual products or brands. For more information on LEED, visit www.usgbc.org/contact

Burmatex Ltd
Victoria Mills, The Green
Ossett, West Yorkshire
WF5 0AN
United Kingdom

T +44 (0) 1924 262 525
F +44 (0) 1924 280 033
UK email: projects@burmatex.co.uk
International email: international@burmatex.co.uk
www.burmatex.co.uk

Burmatex reserves the right to improve the specification of all products without prior notification. E&OE
Burmatex carpets and carpet tiles should be installed and used in full accordance with instructions at www.burmatex.co.uk and recognised trade standards.
Orders are subject to Burmatex terms and conditions of sale.
See: www.burmatex.co.uk

LRV values for **infinity** & **infinity stitch**

Product code	Product colour name	CIE Y	CIE L
6402	atomic blue	11.46	40.34
6404	iron grey	16.96	48.21
6413	neutron blue	5.20	27.31
6416	triton storm	7.62	33.19
6420	titan slate	10.11	38.04
6422	planet blue	13.50	43.51
6434	blue asteroid	11.23	39.96
6435	lunar orbit	5.86	29.05
6436	total eclipse	2.74	18.99
6437	polar ice	17.95	49.43
6438	stellar silver	14.76	45.31
6439	universal grey	12.34	41.76
6440	moon dust	14.02	44.27
6441	black hole	3.47	21.83
6442	fossil	8.87	35.74
6443	frozen rock	17.53	48.92
6444	solar flare	5.32	27.63
6445	verdant star	7.67	33.28
6446	green crystal	9.14	36.26
6447	starburst	8.66	35.32
6448	ultraviolet	4.37	24.86
6449	granite pink	4.05	23.85
6450	cyber magenta	3.52	22.02
6451	nova red	5.07	26.92
21405	stitch - blue aurora	7.38	32.65
21401	stitch - cosmic blue	10.20	38.21
21402	stitch - gravity blue	4.26	24.53
21404	stitch - galaxy blue	6.80	31.34
21406	stitch - meteor	6.77	31.28
21403	stitch - fusion black	5.96	29.30