

# Burmatex®

MANUFACTURERS OF CREATIVE FLOORING 



**go to**

---

**low carbon carpet tiles**

## great for offices



The refreshed palette of **go to** uses **EqoCycle®75 recycled** solution dyed nylon. This, combined with our **BioBase™ recycled** backing makes **go to** a **low carbon** carpet tile.

---

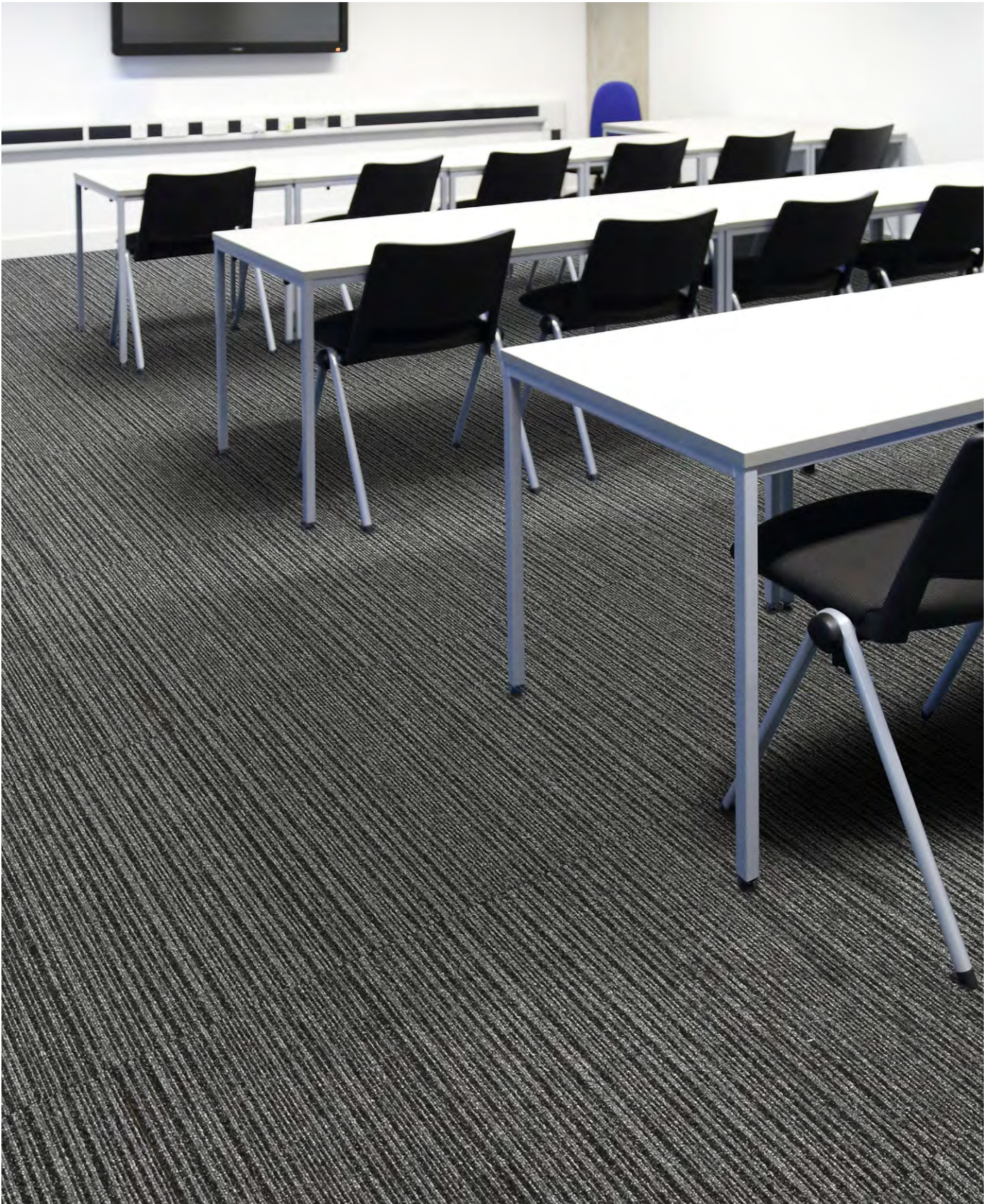
**go to** offers two designs, sixteen plains and four stripe options. The range of colours has been increased to create this attractively practical, versatile and flexible palette.

---

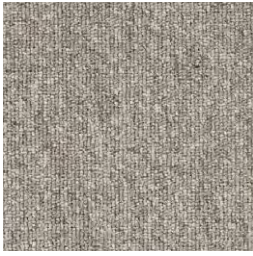
**go to** has a proven track record of high performance and resilience that Burmatex® carpet tiles are known for. This core level loop range is the go to choice for users that are looking for a quick and easy carpet installation option.



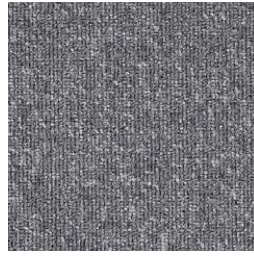
ideal for education



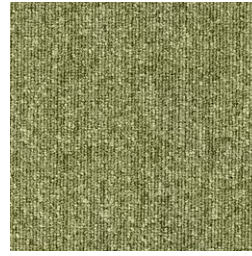
## go to colour palette



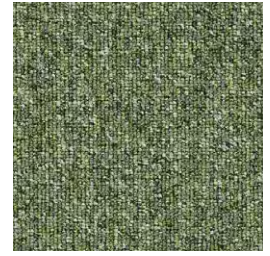
**21813 light beige**  
LRV: Y 21.14 - L 53.64



**21817 light grey**  
LRV: Y 13.98 - L 44.16



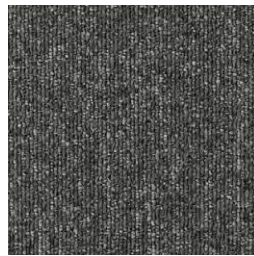
**21811 green**  
LRV: Y 16.80 - L 48.49



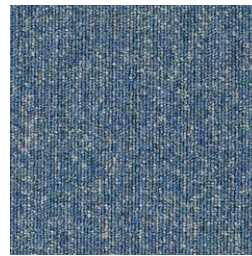
**21818 moss green**  
LRV: Y 12.53 - L 42.02



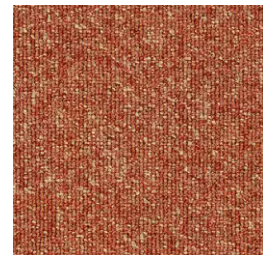
**21814 medium beige**  
LRV: Y 13.20 - L 43.04



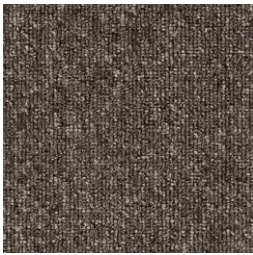
**21803 medium grey**  
LRV: Y 9.19 - L 36.35



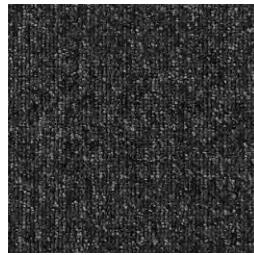
**21810 sky blue**  
LRV: Y 12.13 - L 40.96



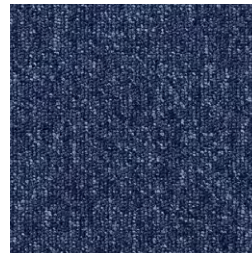
**21819 orange**  
LRV: Y 12.04 - L 41.23



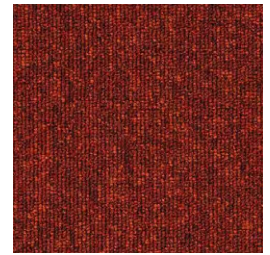
**21815 dark beige**  
LRV: Y 9.07 - L 35.97



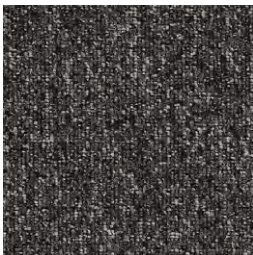
**21802 coal grey**  
LRV: Y 5.21 - L 27.34



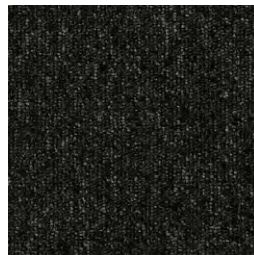
**21806 sea blue**  
LRV: Y 6.45 - L 30.52



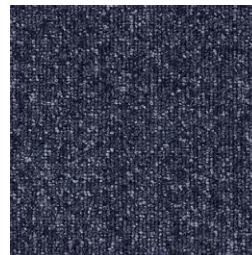
**21820 red**  
LRV: Y 4.68 - L 25.62



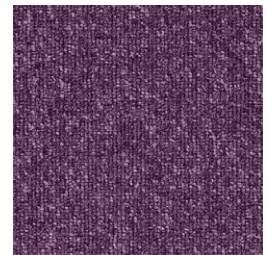
**21816 metal grey**  
LRV: Y 6.27 - L 30.04



**21801 jet black**  
LRV: Y 3.01 - L 20.09



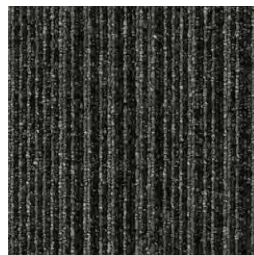
**21822 deep blue**  
LRV: Y 5.74 - L 28.68



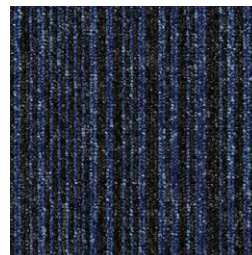
**21821 purple**  
LRV: Y 6.67 - L 31.04



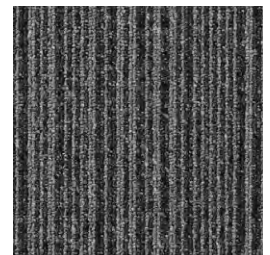
**21915 dark beige stripe**  
LRV: Y 6.03 - L 29.16



**21903 medium grey stripe**  
LRV: Y 6.49 - L 30.61



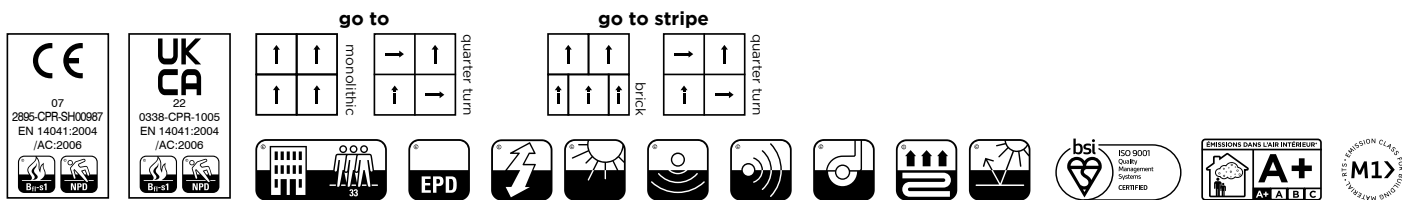
**21906 sea blue stripe**  
LRV: Y 4.83 - L 26.25



**21902 coal grey stripe**  
LRV: Y 10.36 - L 38.48

# technical specification

Yarn	<b>EgoCycle® 75 recycled</b> solution dyed nylon
Dimensions	50cm x 50cm
Pile Weight	500g/m <sup>2</sup>
Total Weight	3810g/m <sup>2</sup>
Total Thickness	5.5mm
Construction	Tufted 1/10th gauge loop
Pile Density	196,850/m <sup>2</sup>
Backing	<b>BioBase™</b> backing (recycled BS EN ISO 14021)
Wear Classification	Class 33 Heavy Commercial Use (BS EN 1307)
Castor Chair Rating	Pass - continuous use (BS EN 985)
Luxury Rating Class	LC1
Flammability	Euroclass Bfl-s1
Static loading	BS 4939: 1987 (2003) Recovery >80% (24hrs)
Reduction in Impact Noise	BS EN ISO 10140-3:2010 20dB
VOC	Class A+
Warranty	15 years
Number Of Tiles Per Box	20 (5m <sup>2</sup> )



## eco<sub>2</sub>matters®

We are committed to helping deliver a sustainable future, because we believe that what we do **matters**. To help us deliver on this commitment, we have developed **eco<sub>2</sub>matters®**, our sustainability principles, supported by independent 3rd party verification.



Made from **EgoCycle® 75 recycled** solution dyed nylon, and our unique **BioBase™ recycled** backing, **go to** delivers class 33 Heavy Commercial Use performance at unrivalled value. Supported by high stock levels, and rapid delivery, the 20 colour palette of coordinating plains and stripes provides versatility for use in any space.

	<b>low carbon</b>	<b>go to</b> is <b>low carbon</b>		<b>recovery</b> take back service	<b>Burmatex® reco<sub>2</sub>very</b> take back service provides a no landfill solution for your used tiles
	<b>EgoCycle® 75 recycled yarn</b>	<b>go to</b> uses <b>EgoCycle® 75 recycled</b> yarn		<b>100% certified renewable</b>	<b>Burmatex®</b> products are made using 100% certified <b>renewable</b> electricity
	<b>BioBase™ backing</b>	<b>go to</b> uses <b>BioBase™ recycled</b> backing		<b>independently 3rd party verified</b>	<b>eco<sub>2</sub>matters®</b> declarations are independently 3rd party verified

**EPD**  
**Burmatex®** products are supported by 3rd party independently verified, product specific EPD's

**LEED**  
**Burmatex®** products contribute towards Leed accreditation

**SKA**  
**Burmatex®** products adhere to SKA standards

**WELL Building Standards**  
**Burmatex®** products contribute to WELL Building Standards



### need a BIM object?

all our products have BIM objects available on our website

For more information about  
**go to low carbon** carpet tiles  
Visit [www.burmatex.co.uk/goto](http://www.burmatex.co.uk/goto)

Need **advice**? Help with the **design**?  
Call your Business Area Manager

**Need a go to shadecard or samples?**



Scan the QR code  
Call +44 (0) 1924 262525  
Email [samples@burmatex.co.uk](mailto:samples@burmatex.co.uk)

# Burmatex<sup>®</sup>

MANUFACTURERS OF CREATIVE FLOORING 

---

KEEP IN TOUCH



---

Burmatex Ltd  
Victoria Mills, The Green,  
Ossett, West Yorkshire  
WF5 0AN